

LNG Vertical High Pressure Pump VP100L

■ Applications

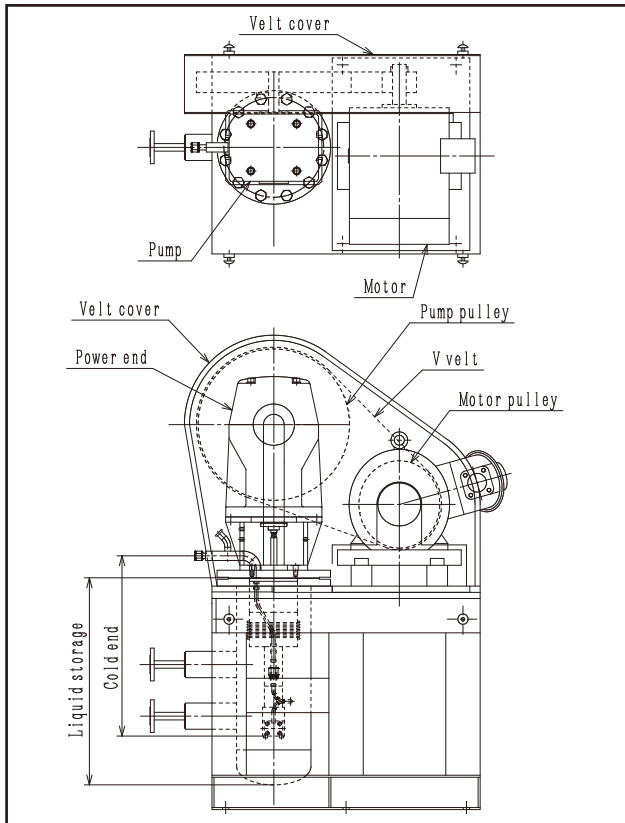
- Natural gas automobile station
- Cylinder filling
- Supply cryogenic liquefied gas

■ Features & Benefits

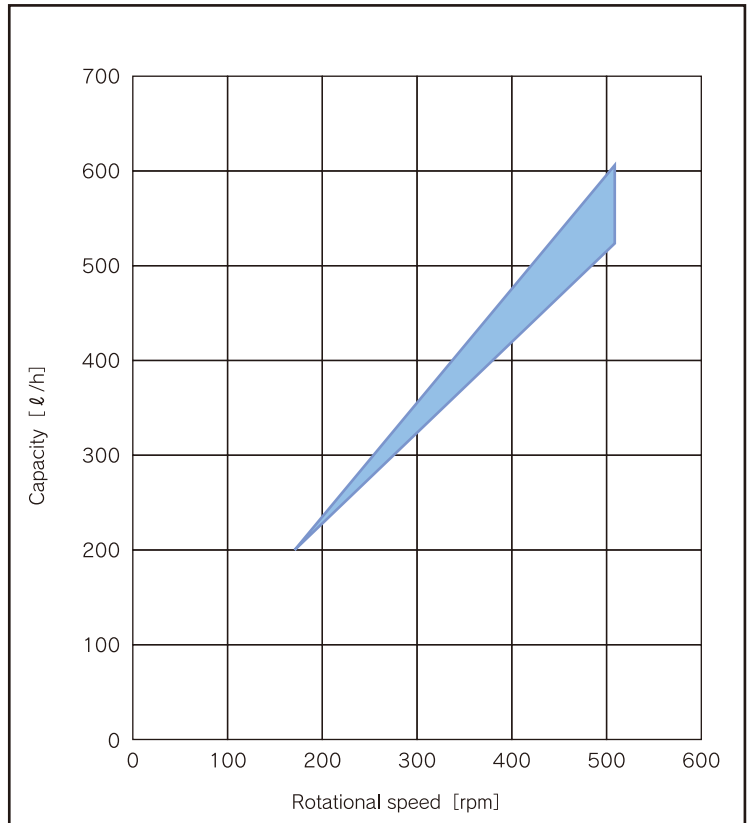
- Quick start
- Reduce evaporation loss by using vacuum jacket
- Wide range of flow
- Inverter drive
- Passed High Pressure Gas Safety Act
- Loading explosion proof motor



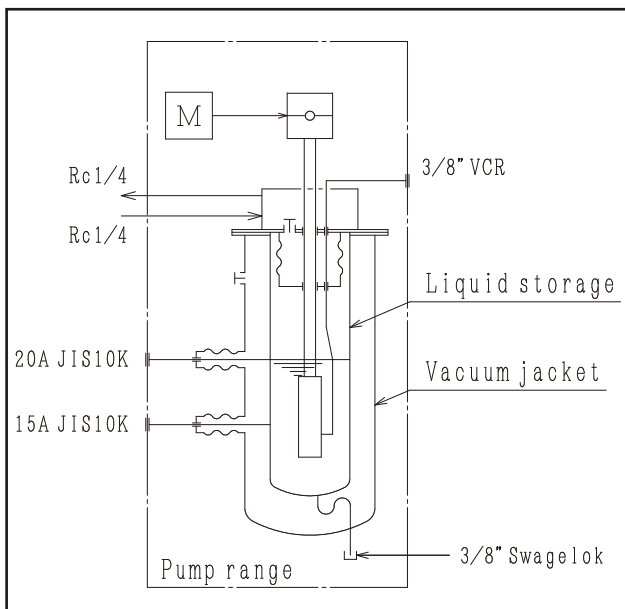
Outline



Performance



Fitting



Specification

Pump Type		VP100L
Design pressure	Suction pressure [MPa]	0.01 ~ 0.99 (0.1 ~ 9.9bar)
	Discharge pressure [MPa]	30 (300bar)
Capacity [ℓ/h]		200 ~ 600
Design temperature [°C]		-196 ~ +40
NPSHR [m]		3,000
Motor power [kW]		3.7 ~ 15
Weight [kg]		About 300
Power supply voltage		3-phase AC 200/220V or 400/440V

※Change specifications depend on condition